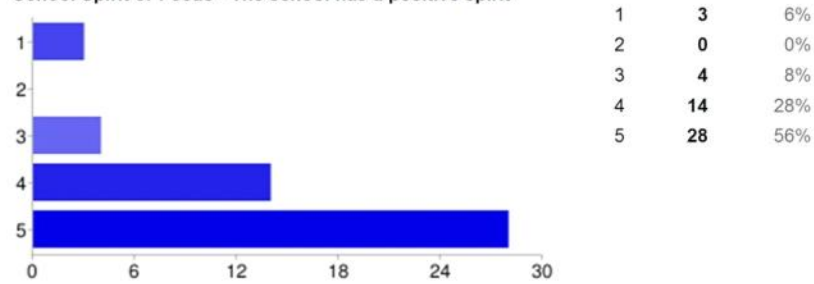


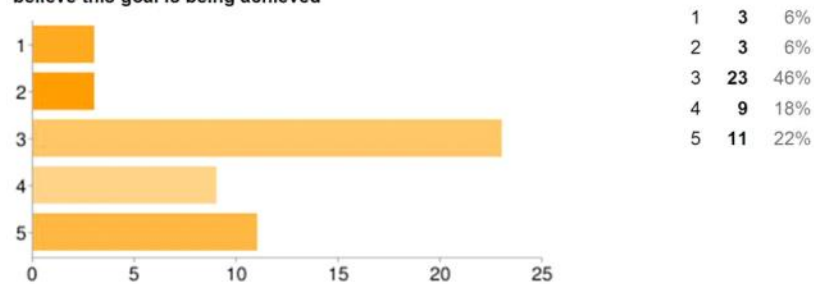
50 [responses](#)

Summary [See complete responses](#)

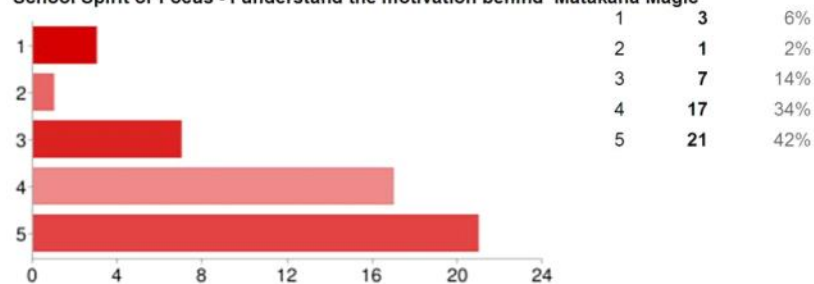
School Spirit or Focus - The school has a positive spirit

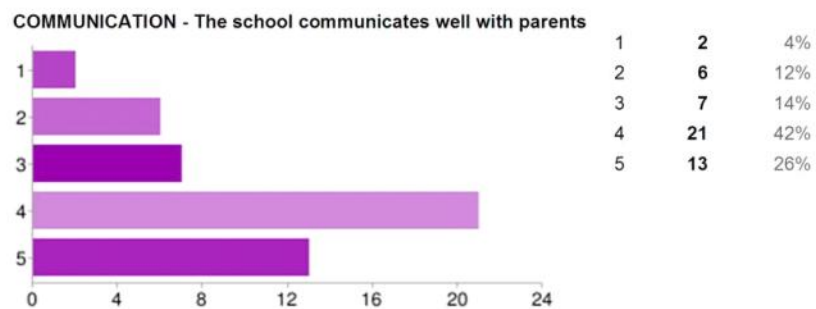
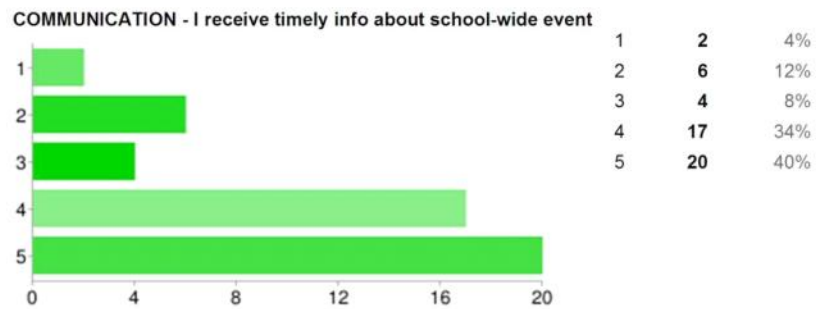
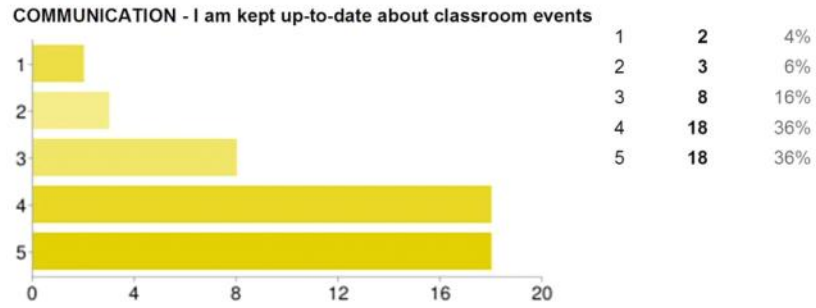


School Spirit or Focus - The schools vision is 'taking students beyond expectations'. I believe this goal is being achieved

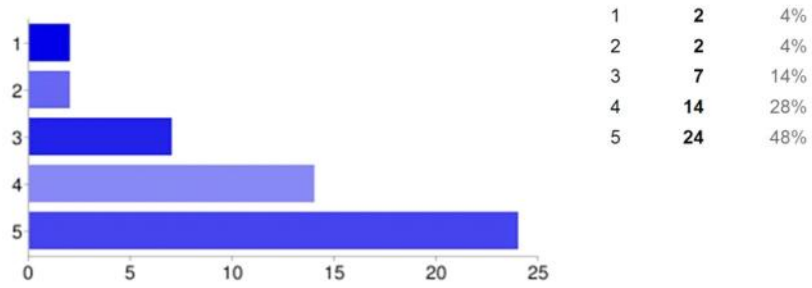


School Spirit or Focus - I understand the motivation behind 'Matakana Magic'

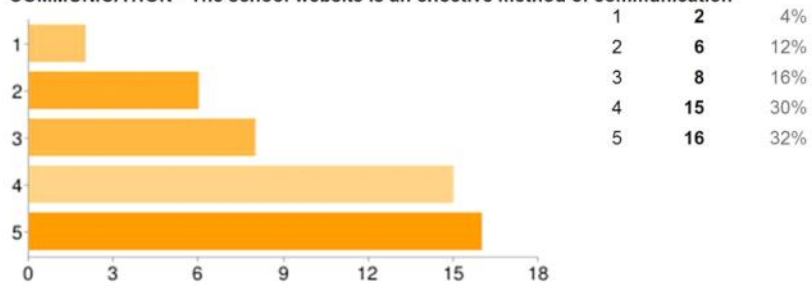




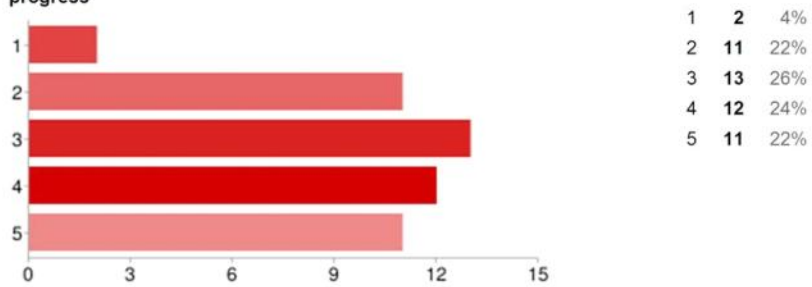
COMMUNICATION - The school newsletter is effective at conveying information



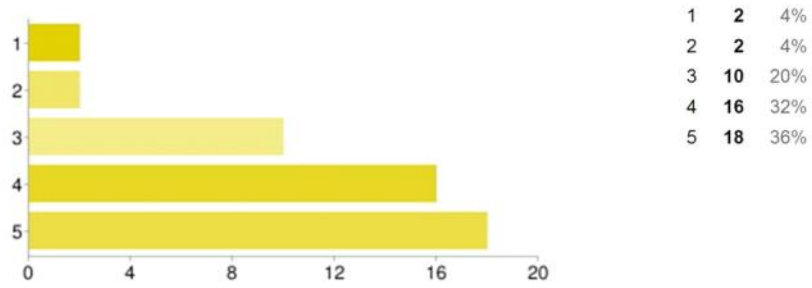
COMMUNICATION - The school website is an effective method of communication



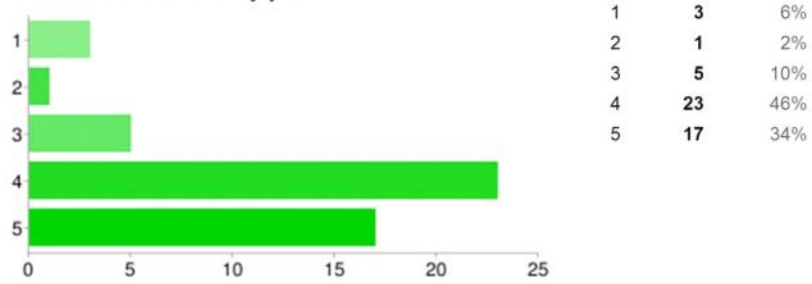
COMMUNICATION - The school provides parents with detailed information about student progress



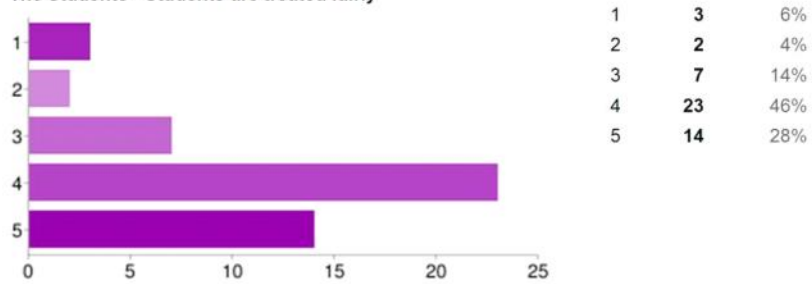
COMMUNICATION - The school responds to my enquiries and concerns effectively and gives feedback if needed



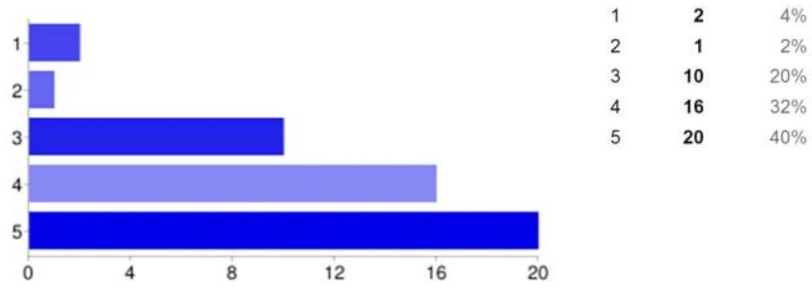
The Students - Students enjoy school



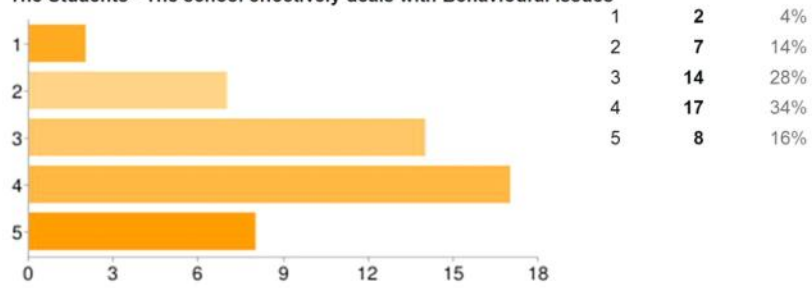
The Students - Students are treated fairly



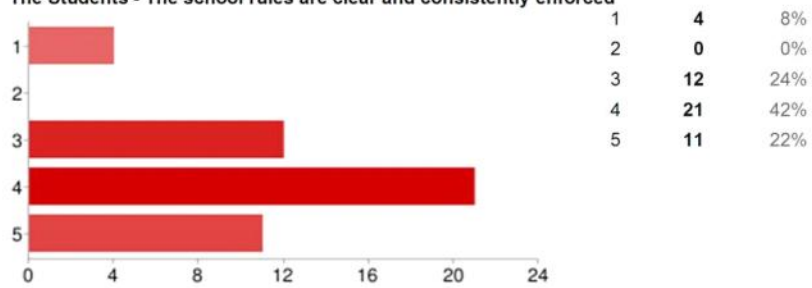
The Students - High standards of behaviour are expected



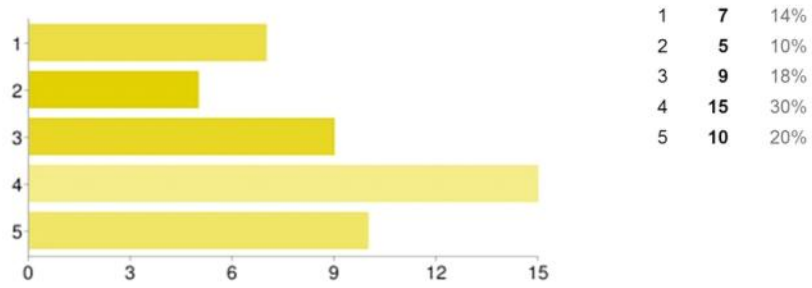
The Students - The school effectively deals with Behavioural issues



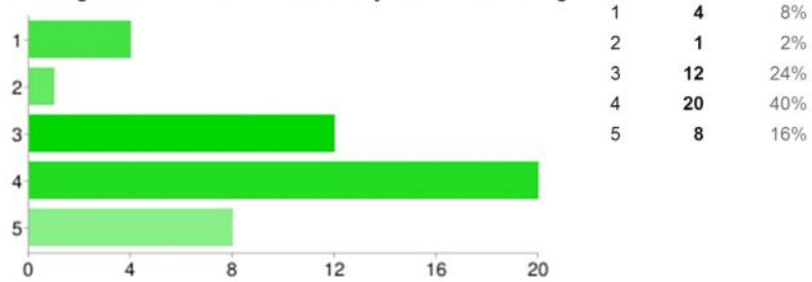
The Students - The school rules are clear and consistently enforced



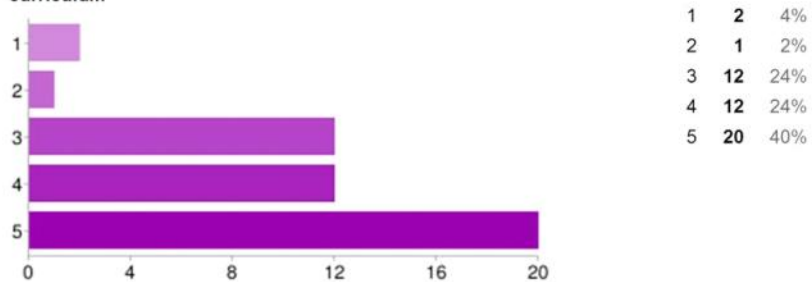
Learning - The school provides suitable programmes to meet individual students needs



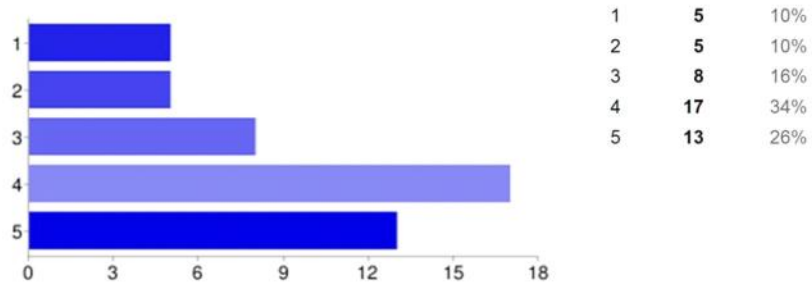
Learning - The school uses ICT effectively to enhance learning.



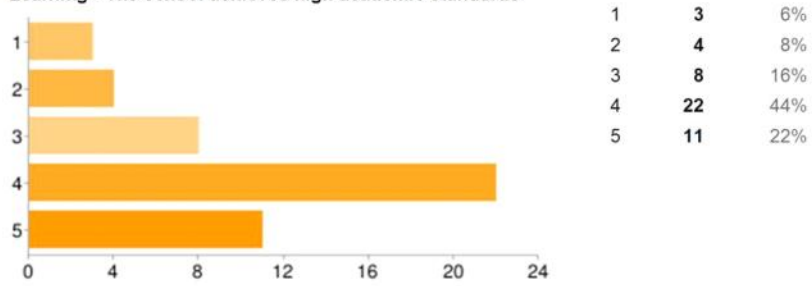
Learning - The school provides camps and trips that complements teaching of the curriculum



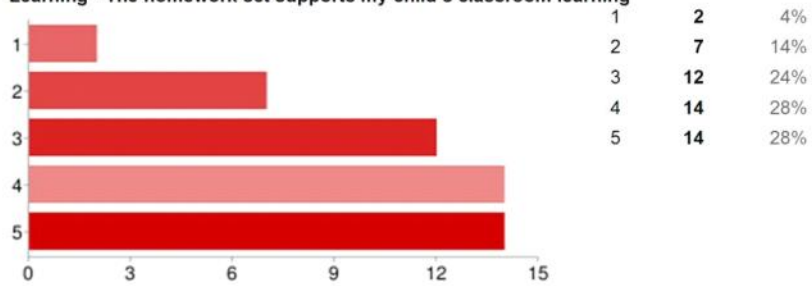
Learning - Students are encouraged to develop to their full potential



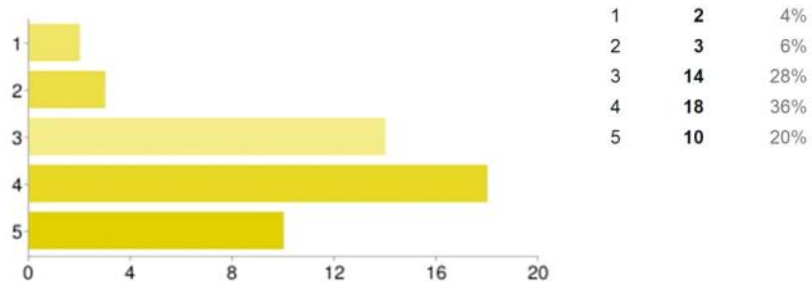
Learning - The school achieves high academic standards



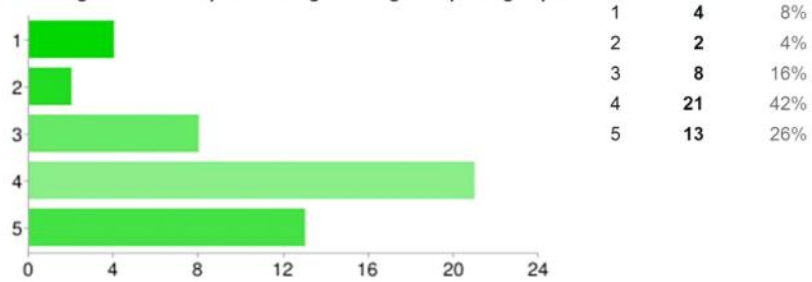
Learning - The homework set supports my child's classroom learning



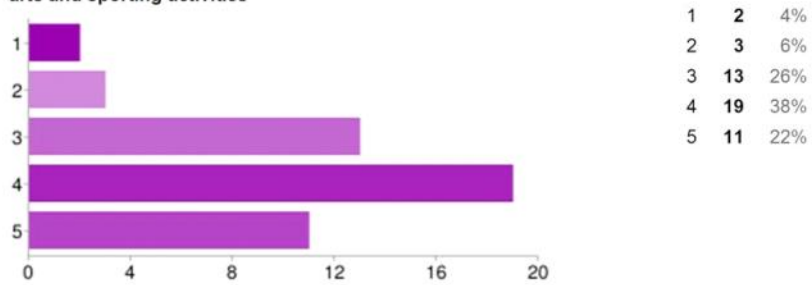
Learning - The school provides a good range of art and cultural experiences



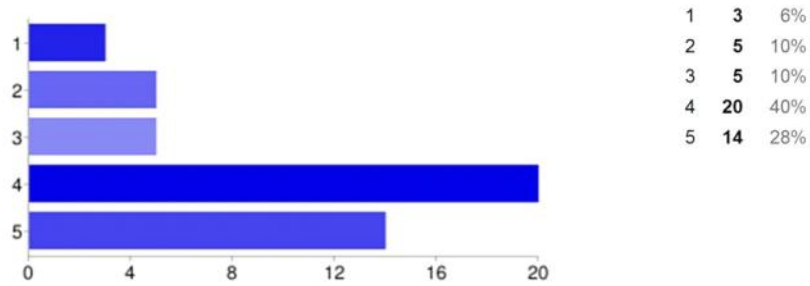
Learning - The school provides a good range of sporting experiences



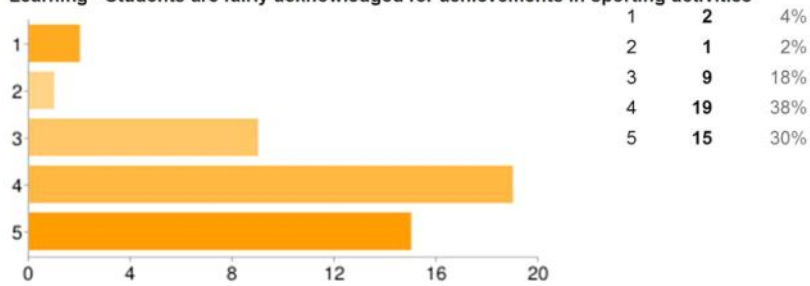
Learning - The school achieves a good balance between academic subjects, performing arts and sporting activities



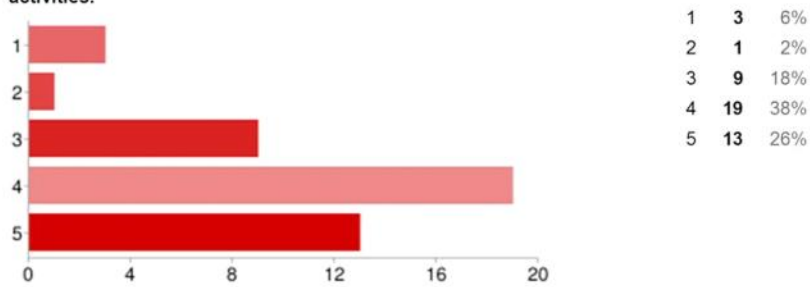
Learning - Students are fairly acknowledged for academic improvements and achievements



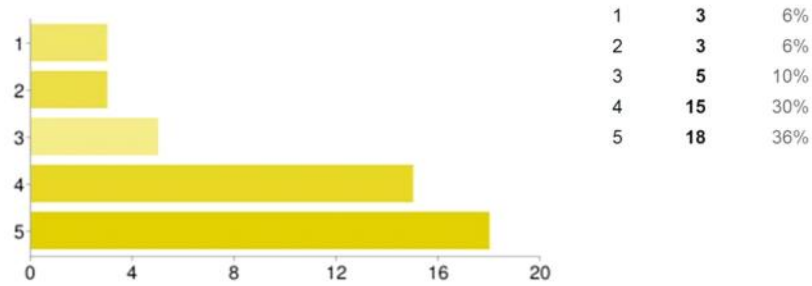
Learning - Students are fairly acknowledged for achievements in sporting activities



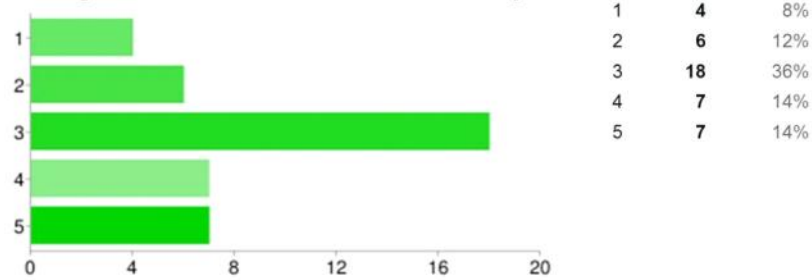
Learning - Students are fairly acknowledged for achievements in arts and cultural activities.



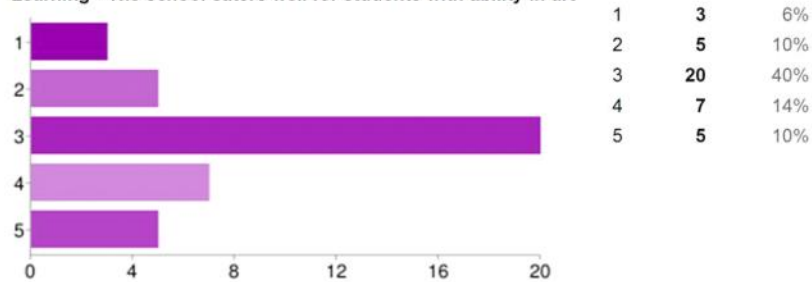
Learning - The school caters well for students with learning disabilities



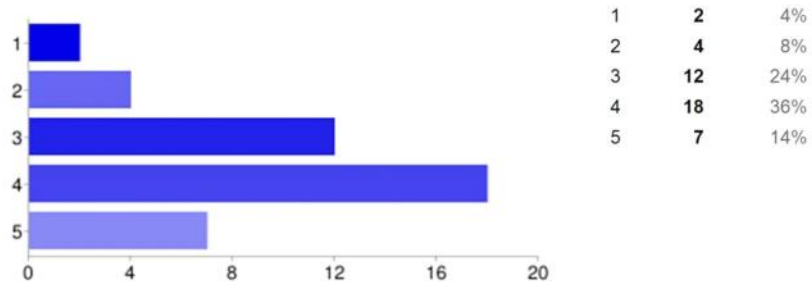
Learning - The school caters well for students with ability in music



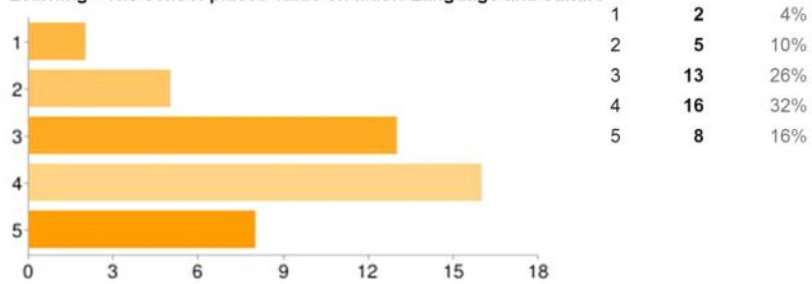
Learning - The school caters well for students with ability in art



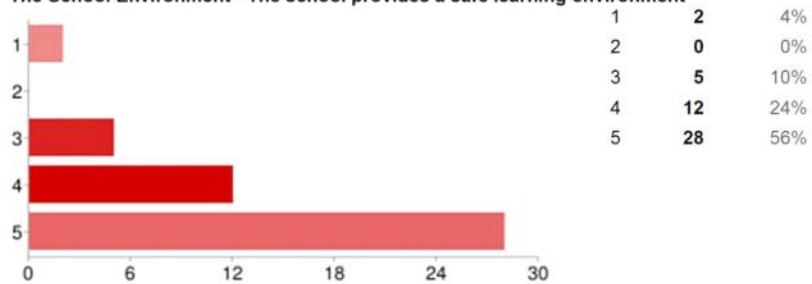
Learning - The school caters well for students with ability in sport



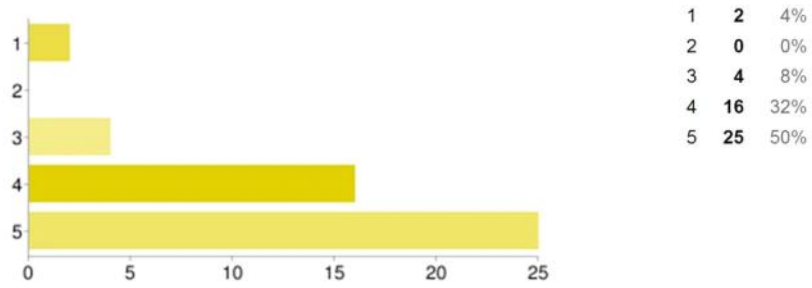
Learning - The school places value on Maori Language and culture



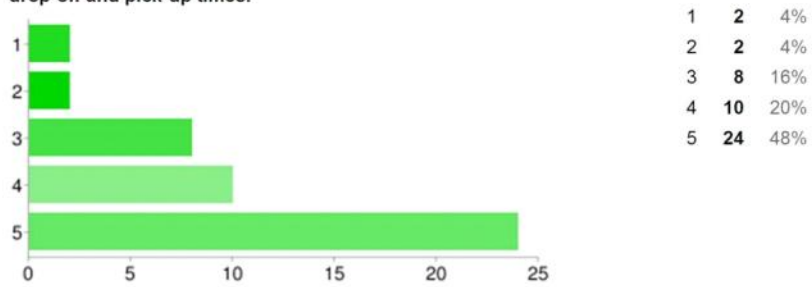
The School Environment - The school provides a safe learning environment



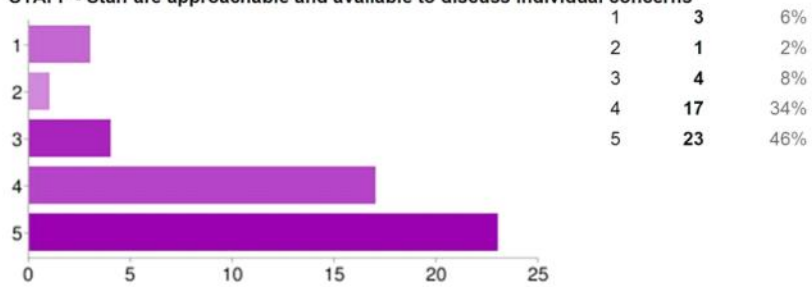
The School Environment - Students and staff members take pride in the school and help keep buildings and grounds clean and attractive.



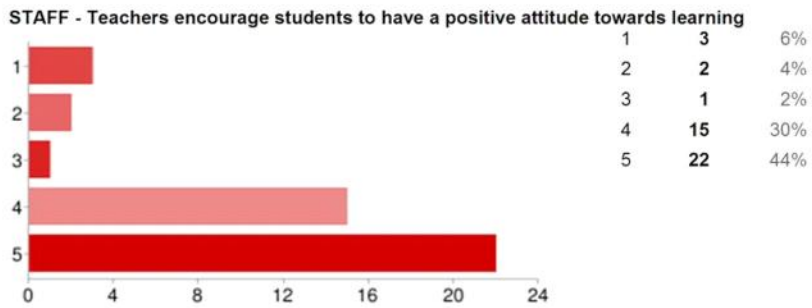
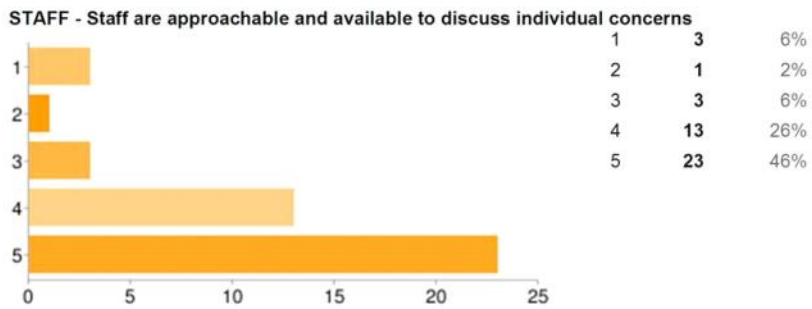
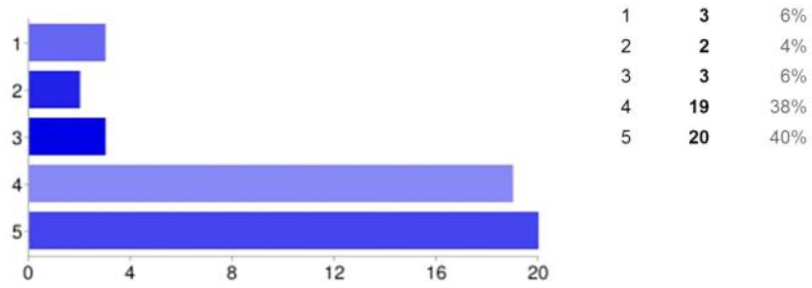
The School Environment - I agree with the schools efforts to encourage alternative methods of getting children to school (bus, walking school bus), and minimizing cars at drop-off and pick-up times.



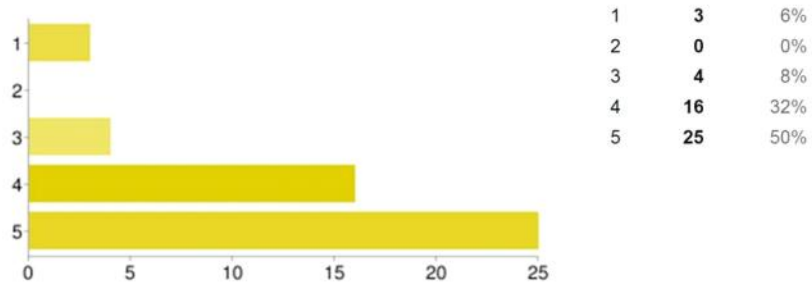
STAFF - Staff are approachable and available to discuss individual concerns



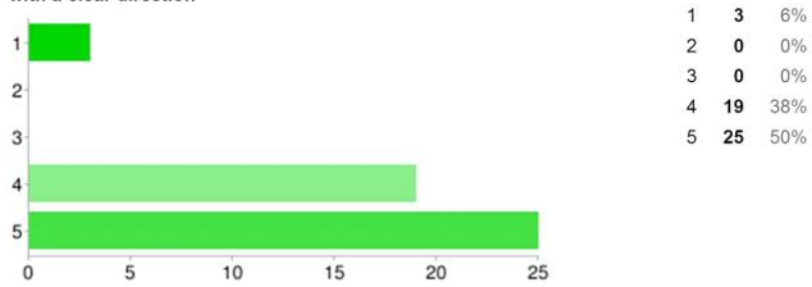
STAFF - Teachers encourage students to have a positive attitude towards learning



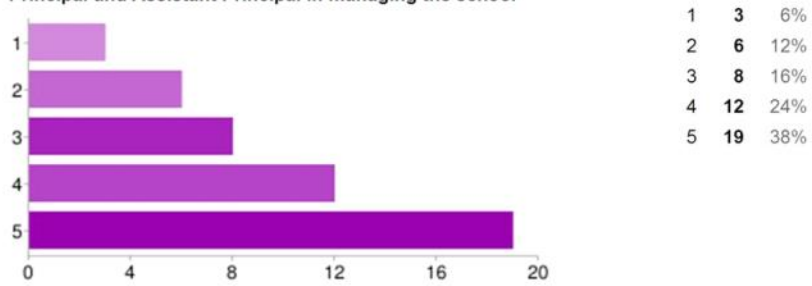
SCHOOL MANAGEMENT AND ADMINISTRATION - The school is well managed



SCHOOL MANAGEMENT AND ADMINISTRATION - The school has positive leadership with a clear direction



SCHOOL MANAGEMENT AND ADMINISTRATION - I understand the difference between the role of the BOT in governing the school, and the role of the Principal, Deputy Principal and Assistant Principal in managing the school



SCHOOL MANAGEMENT AND ADMINISTRATION - I support the introduction of a yearly 'activities fee' to cover all class trips, events, visiting performers etc.

